

## ● Ceramic Resonator (陶瓷谐振器) – ZTA, ZTT, ZTB series

### ● ZTB, ZTBF - Series



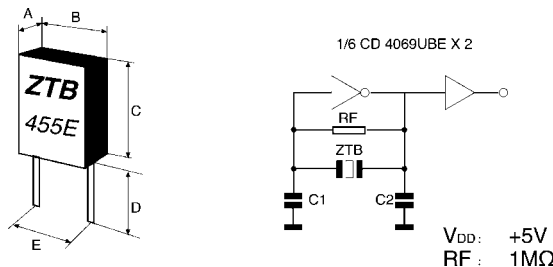
#### ● Applications 用途:

Transceivers, pagers, LAN card, CATV sets, Car alarms, Home security, IR Remote controls, etc. 无线收发机, 传呼机, 有线电视, 汽车警报器, 家庭防盗, 红外线遥控器, 等。

#### ● Feature 特征:

- Wide Frequency range from 190K up to 1250KHz. 频率范围 190K ~ 1250KHz.
- Bulk in vinyl bag package. 塑料袋散包装。
- No adjustments is necessary for oscillation circuits. 电路无需调整。

### ● ZTB Series.KHz Ceramic Resonators in DIP Packaging (低频用引线型陶瓷谐振器)。

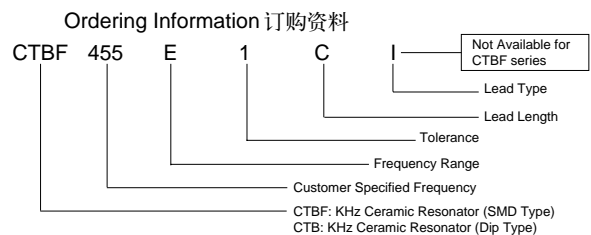
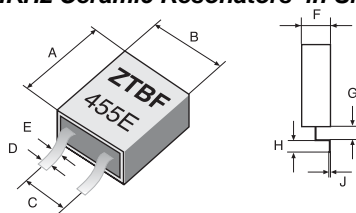


#### Electrical Specifications (电气规格)

Part Number 料号	Frequency Range(KHz) 频率范围	Frequency Tolerance (at 25 °C) 频差	Temperature Characteristics of Oscillation Frequency (-20°C ~ +80°C) 温度频差	Aging Rate (for 10 Years) 老化率	Resonant Resistance Ω max. 电阻	C1 (pF)	C2 (pF)	Dimensions (Tolerance: ± 0.3mm) 尺寸				
								A	B	C	D	E
ZTB □□□ D	190 ~ 249	± 1.0KHz	± 0.3%	± 0.5%	20	330	470	3.8	13.5	14.7	8.0	10.0
ZTB □□□ D	250 ~ 374	± 1.0KHz	± 0.3%	± 0.5%	20	220	470	3.8	11.0	12.2	7.0	7.7
ZTB □□□ P	375 ~ 429	± 2.0KHz	± 0.3%	± 0.5%	20	120	470	3.6	7.9	9.3	6.0	5.0
ZTB □□□ E	430 ~ 449	± 2.0KHz	± 0.3%	± 0.5%	20	100	100	3.6	7.9	9.3	5.0	5.0
ZTB □□□ E	450 ~ 509	± 2.0KHz	± 0.3%	± 0.5%	20	100	100	3.5	7.0	9.0	5.0	5.0
ZTB □□□ P	510 ~ 699	± 2.0KHz	± 0.3%	± 0.5%	35	100	100	3.5	7.0	9.0	5.0	5.0
ZTB □□□ J	700 ~ 999	± 0.5%	± 0.3%	± 0.5%	70	100	100	2.2	5.0	6.0	3.5	2.5
ZTB □□□ MJ	1000 ~ 1250	± 0.5%	± 0.3%	± 0.5%	100	100	100	2.2	5.0	6.0	3.5	2.5

● Please consult for other specifications. (若有其它规格需求请告知)

### ● ZTBF Series.KHz Ceramic Resonators in SMD Packaging. (低频用表面贴型陶瓷谐振器)



#### Electrical Specifications (电气规格)

Part Number 料号	Frequency Range (KHz) 频率范围	Frequency Tolerance (at 25 °C) 频差	Temperature Characteristics of Oscillation Frequency (-20°C ~ +80°C) 温度频差	Aging Rate (for 10 Years) 老化率	Dimensions (mm) 尺寸								
					A	B	C	D	E	F	G	H	J
ZTBF □□□ P	375 ~ 440	± 2.0KHz	± 0.3%	± 0.5%	9.3 ± 0.5	7.9 ± 0.5	5.0 ± 0.3	0.7 ± 0.2	1.0 ± 0.2	3.6 ± 0.5	0.9 ± 0.3	1.5 ± 0.3	0.15 ± 0.05
ZTBF □□□ E	441 ~ 509	± 2.0KHz	± 0.3%	± 0.5%	9.0 ± 0.5	7.0 ± 0.5	5.0 ± 0.3	0.6 ± 0.2	0.9 ± 0.2	3.5 ± 0.5	0.9 ± 0.3	1.5 ± 0.3	0.15 ± 0.05
ZTBF □□□ P	510 ~ 699	± 2.0KHz	± 0.3%	± 0.5%	9.0 ± 0.5	7.0 ± 0.5	5.0 ± 0.3	0.6 ± 0.2	0.9 ± 0.2	3.5 ± 0.5	0.9 ± 0.3	1.5 ± 0.3	0.15 ± 0.05
ZTBF □□□ J	700 ~ 999	± 0.5%	± 0.3%	± 0.5%	6.0 ± 0.5	5.0 ± 0.5	2.5 ± 0.3	0.6 ± 0.2	0.8 ± 0.2	2.2 ± 0.5	0.6 ± 0.3	1.0 ± 0.3	0.12 ± 0.05
ZTBF □□□ MJ	1000 ~ 1250	± 0.5%	± 0.3%	± 0.5%	6.0 ± 0.5	5.0 ± 0.5	2.5 ± 0.3	0.6 ± 0.2	0.8 ± 0.2	2.2 ± 0.5	0.6 ± 0.3	1.0 ± 0.3	0.12 ± 0.05

● Please consult for other specifications. (若有其它规格需求请告知)